

SITE

furnishings

14TH
EDITION



www.produitsreplast.com



Produits
RE  **PLAST**

Table of CONTENTS

Produits Re-Plast inc., at the forefront of recycling3

P4 SIGNATURE COLLECTION

P6 _ NOTRE-DAME SERIES
P8 _ KINGSEY SERIES
P10 _ CASCADES SERIES
P11 _ MODENA SERIES
P12 _ PARKER SERIES
P13 _ DA VINCI SERIES
P14 _ LAVIOLETTE SERIES
P15 _ FRANKLIN SERIES

P16 AVENUE COLLECTION

P18 _ PUBLIC PLACE SERIES
P27 _ CONTOUR SERIES
P28 _ NICOLET SERIES
P30 _ VICTORIAN SERIE
P31 _ DE VERCHERE SERIES
P31 _ PHOENIX SERIES
P32 _ STONEHAM SERIES
P33 _ BROMONT SERIES

P34 LEISURE COLLECTION

P36 _ SÉRIE PARC
P42 _ SÉRIE CLASSIQUE
P43 _ SÉRIE TREMBLANT
P44 _ SÉRIE ADIRONDACK
P45 _ SÉRIE NEW YORK

Urbain Design Protections, Warranty and colors46

Perma-deck (colors)49



Produits Re-Plast inc., located in Notre-Dame-du-Bon-Conseil, Quebec, Canada, designs, manufactures and markets the Urbain Design™ line of site furnishings. These products are made of 100% recycled plastic: UltraPlast™, an amalgam of post-consumer and post-industrial recycled plastic. Our commitment to protecting the environment and promoting sustainability helps set us apart from the competition.

Urbain Design™, which is made from UltraPlast™ recycled plastic, offers a complete and varied line of stylized and long-lasting site furnishings.

Perma-Deck® Advantage+ is an attractive, practical and innovative solution for your patio or balcony. It is an ecological product made from 100% recycled plastic and it is unquestionably the best alternative for your balconies, combining maximum durability with minimal maintenance.

This line is made up of three distinct families: Urbain Design™ Signature, Urbain Design™ Avenue and Urbain Design™ Leisure. As described in the following pages, each family offers a set of furnishings that will meet the needs of architects, urban designers, public space and recreational park managers as well as consumers.

Urbain Design™ products are attractive, comfortable and high quality. Given our environmental orientation, deep respect for the environment and sustainable development perspective, Produits Re-Plast uses environmentally friendly manufacturing methods and processes.

Together, we're doing our best to recycle and use recycled materials. It's all part of our commitment to help preserve natural resources. !



SIGNATURE

Collection

The top-quality Signature collection is ideal for all kinds of settings, even those where styles--or the weather--may change. And our unique products are all designed to last for years.

_ NOTRE-DAME SERIES

_ KINGSEY SERIES

_ CASCADES SERIES

_ MODENA SERIES

_ PARKER SERIES

_ DA VINCI SERIES

_ LAVIOLETTE SERIES

_ FRANKLIN SERIES

Trendy
Unique
Distinctive

SIGNATURE NOTRE-DAME SERIES



72" STRAIGHT BENCH

Product code(s): 295105

Dimensions: 1816 mm x 606 mm x 451 mm

(71 1/2" x 23 27/32" x 17 3/4" high)

Weight: 67.23 kg (148.23 lb.)

72" BENCH

Product code(s): 295106-2013

Dimensions: 1816 mm x 662 mm x 811 mm

(71 1/2" x 26 1/16" x 31 15/16" high)

Weight: 78 kg (172.14 lb.)

Features

- ✕ The bench slats are made of UltraPlast™ recycled plastic, the structure is made of cast aluminum coated with our InfiniGuard Professional anti-corrosion system
- ✕ The bench is made of 13 degree and 22 degree, 1 1/16" x 2 3/16" (27 mm x 56 mm) slats and 1 1/4" x 3 (25 mm x 68 mm) slats
- ✕ Stainless steel hardware
- ✕ Stainless steel standard anchor
- ✕ Factory assembled

Available installations

- ✕ Surface mounted

Options

- ✕ Stainless steel anti-theft anchor
- ✕ Stainless steel anti-theft hardware
- ✕ In-ground permanent anti-theft anchor
- ✕ Customize engraving





Rustic!

27" FLOWER PLANTER

Product code(s): 295110

Dimensions: 690.56 mm diam. x 669 mm
(27 3/16" diam. x 26 3/8" high)

Weight: 39.13 kg (86.26 lb.)

Features

- ✘ The flower planter is made of UltraPlast™ recycled plastic and its structure is made of steel coated with our InfiniGuard Professional anti-corrosion system
- ✘ The flower planter slats measure 25 mm x 59 mm - 13 degree (1" x 2 1/2")
- ✘ Polyethylene liner container
- ✘ Capacity: 10 US gal. (38 liters)
- ✘ Chameleon hardware
- ✘ Stainless steel standard anchor for concrete
- ✘ Factory assembled

Available installations

- ✘ Surface mounted
- ✘ In-ground mounted

Options

- ✘ Stainless steel anti-theft anchor
- ✘ Stainless steel anti-theft hardware



3 WAYS RECYCLING UNIT

Product code(s): 295107-3

Dimensions: 1579 mm x 671 mm x 851 mm
(62 3/16" x 26 7/16" x 33 1/2" high)

Weight: 107.10 kg (236.12 lb.)

Features

- ✘ The recycling unit is made of UltraPlast™ recycled plastic and the structure is made of steel coated with our InfiniGuard Professional anticorrosion system
- ✘ The unit is made of 25 mm x 59 mm - 13 degree (1" x 2 1/2")
- ✘ Steel hoops 6.4 mm thick (1/4")
- ✘ Removable steel lid
- ✘ Galvanized steel receptacle: 75 liters (20 US gal.)
- ✘ Chameleon hardware
- ✘ Stainless steel standard anchor for concrete
- ✘ Factory assembled
- ✘ Choice of Pictogram offered

Available installations

- ✘ Surface mounted

Options

- ✘ Stainless steel anti-theft hardware
- ✘ Stainless steel anti-theft anchor

27" TRASH RECEPTACLE

Product code(s): 295109

Dimensions: 713 mm diam. x 853 mm
(27 3/16" x 33 5/8" high)

Weight: 43.32 kg (102.11 lb.)

Features

- ✘ The trash receptacle is made of UltraPlast™ recycled plastic and its structure is made of steel coated with our InfiniGuard Professional anti-corrosion system
- ✘ Trash receptacle is made of 25 mm x 59 mm - 13 degree (1" x 2 1/2")
- ✘ Steel hoops 6.4 mm thick (1/4")
- ✘ Galvanized steel receptacle: 75 liters (20 US gal.)
- ✘ Chameleon hardware
- ✘ Stainless steel standard anchor for concrete
- ✘ Factory assembled

Available installations

- ✘ Surface mounted
- ✘ In-ground mounted

Options

- ✘ Stainless steel anti-theft hardware
- ✘ Stainless steel anti-theft anchor
- ✘ Lid



SIGNATURE KINGSEY SERIES



Unique and innovative!

60" BENCH

Product code(s): KBO, KB1, KB2, KB4, KB8
Dimensions: 1710 mm x 634 mm x 805 mm
(67 3/8" x 25" x 31 3/4" high)
Weight: 70 kg (155 lb.)

72" BENCH

Product code(s): K10, K12, K14, K18, K19
Dimensions: 2015 mm x 634 mm x 805 mm
(79 3/8" x 25" x 31 3/4" high)
Weight: 81 kg (179 lb.)

60" STRAIGHT BENCH

Product code(s): KS0, KS1, KS2, KS4, KS8
Dimensions: 1589 mm x 514 mm x 443 mm
(62 1/2" x 20 1/4" x 17 1/2" high)
Weight: 40 kg (88 lb.)

72" STRAIGHT BENCH

Product code(s): KR0, KR1, KR2, KR4, KR8
Dimensions: 1894 mm x 514 mm x 443 mm
(74 1/2" x 20 1/4" x 17 1/2" high)
Weight: 48 kg (105 lb.)

Features

- ✘ Cast aluminum structure, coated with our InfiniGuard Professional anti-corrosion system
- ✘ Manufactured with 32 mm x 250 mm (2" x 10") UltraPlast™ recycled plastic slats
- ✘ Reinforced extruded aluminum seating and backrest, coated with InfiniGuard Professional anti-corrosion system
- ✘ Stainless steel hardware
- ✘ Assembly required
- ✘ Stainless steel standard anchors (for concrete)

Available installations

- ✘ Surface mounted

Options

- ✘ Anti-theft stainless steel anchors
- ✘ Customize engraving
- ✘ Factory assembled



FLOWER PLANTER

Product code(s): KF0, KF1, KF2, KF4, KF8

Dimensions: 713 mm x 713 mm x 479 mm
(28 1/8" x 28 1/8" x 18 7/8" high)

Weight: 45 kg (100 lb.)

Polyethylene plastic liner, 59 liters (15 US gal.)
(KF, flower planter only), OPM

TRASH RECEPTACLE

Product code(s): KT0, KT2, KT4, KT8, KT9

Dimensions: 713 mm x 713 mm x 981 mm
(28 1/8" x 28 1/8" x 35 5/8" high)

Weight: 93 kg (204 lb.)

Polyethylene plastic liner, 121 liters (32 US gal.)
(KT, trash receptacle only), OPC

Features

- ✘ Steel structure coated with InfiniGuard Professional anti-corrosion system
- ✘ Receptacle made with 41 mm x 153 mm (2" x 7") UltraPlast™ recycled plastic slats
- ✘ Cast aluminum legs, coated with InfiniGuard Professional anti-corrosion system
- ✘ Stainless steel hardware
- ✘ Factory assembled
- ✘ Stainless steel standard anchors (for concrete)

Available installations

- ✘ Surface mounted

Options

- ✘ Anti-theft stainless steel anchors
- ✘ Cast aluminum lid (KT, trash receptacle only)
- ✘ Side ashtray (KT, trash receptacle only)
- ✘ Assembly required

RECYCLING STATION

Product code(s): 650, 652, 654, 658, 659

Dimensions: 1201 mm x 738 mm x 1048 mm
(47 5/16" x 29 1/16" x 41 1/4" high)

Weight: 122 kg (269 lb.)

Features

- ✘ Steel structure coated with InfiniGuard Professional anti-corrosion system
- ✘ Station made with 25 mm x 68 mm (1 1/4" x 3") UltraPlast™ recycled plastic slats
- ✘ Tubular station steel legs, 51 mm x 76 mm (2" x 3")
- ✘ Steel signature lid, 1.52 mm thickness (.006") coated with InfiniGuard Professional anti-corrosion system
- ✘ Three inside polyethylene receptacles, capacity 23 US gals. (87 liters)
- ✘ Receptacles empty by the front opening
- ✘ Front opening door with antitheft-lock (key included)
- ✘ Identification plates: trash, plastic and paper
- ✘ Stainless steel galvanized industrial hardware
- ✘ Stainless steel standard anchors (for concrete)
- ✘ Factory assembled

Available installations

- ✘ Surface mounted

Options

- ✘ Side ashtray
- ✘ Anti-theft stainless steel anchors



SIGNATURE CASCADES SERIES



Contemporary lines!

72" BENCH

Product code(s): CB0, CB1, CB2, CB4, CB8
Dimensions: 1892 mm x 606 mm x 797 mm
(74 1/2" x 23 7/8" x 31 3/8" high)
Weight: 99 kg (219 lb.)

96" BENCH

Product code(s): CC0, CC2, CC3, CC4, CC8
Dimensions: 2502 mm x 606 mm x 797 mm
(98 1/2" x 23 7/8" x 31 3/8" high)
Weight: 129 kg (284 lb.)

72" STRAIGHT BENCH

Product code(s): CS0, CS1, CS2, CS4, CS8
Dimensions: 1899 mm x 650 mm x 450 mm
(74 3/4" x 25 5/8" x 17 3/4" high)
Weight: 87 kg (192 lb.)

96" STRAIGHT BENCH

Product code(s): CR0, CR2, CR3, CR4, CR8
Dimensions: 2508 mm x 650 mm x 450 mm
(98 3/4" x 25 5/8" x 17 3/4" high)
Weight: 112 kg (248 lb.)

Features

- ✦ Steel and cast aluminum structure coated with InfiniGuard Professional anti-corrosion system
- ✦ Manufactured with 41 mm x 153 mm (2" x 6") UltraPlast™ recycled plastic slats
- ✦ Cast aluminum legs and braces
- ✦ Tubular steel support, 102 mm diam. (4" diam.)
- ✦ Stainless steel hardware
- ✦ Assembly required
- ✦ Stainless steel standard anchors (for concrete)

Available installations

- ✦ Surface mounted

Options

- ✦ Anti-theft stainless steel anchors
- ✦ Factory assembled
- ✦ Customize engraving



SIGNATURE MODENA SERIES*

11

Sturdy and stylish!

60" BENCH

Product code(s): MOD-5

Dimensions: 1511 mm x 787 mm x 861 mm
(59 1/2" x 31" x 33 7/8" high)

Weight: 89 kg (196 lb.)

72" BENCH

Product code(s): MOD-6

Dimensions: 1816 mm x 787 mm x 861 mm
(71 1/2" x 31" x 33 7/8" high)

Weight: 101 kg (222 lb.)

Features

- ✕ Steel structure coated with InfiniGuard Professional anti-corrosion system
- ✕ Bench manufactured with 37 mm x 62 mm (2" x 3") UltraPlast™ recycled plastic slats
- ✕ Steel bench structure and legs
- ✕ Chameleon hardware
- ✕ Stainless steel standard anchors (for concrete)
- ✕ Factory assembled

Available installations

- ✕ Surface mounted

Options

- ✕ Anti-theft stainless steel anchors
- ✕ In-ground permanent fastening adaptor anchors
- ✕ Anti-theft stainless steel hardware (for concrete)
- ✕ Customize engraving



SIGNATURE SÉRIE PARKER*



Lean design!

60" BENCH

Product code(s): PKB-5

Dimensions: 1524 mm x 555 mm x 813 mm
(60" x 22" x 32" high)

Weight: 65 kg (143 lb.)

72" BENCH

Product code(s): PKB-6

Dimensions: 1829 mm x 555 mm x 813 mm
(72" x 22" x 32" high)

Weight: 72 kg (159 lb.)

Features

- ✕ Steel structure coated with InfiniGuard Professional anti-corrosion system
- ✕ Bench manufactured with 37 mm x 86 mm (2" x 4"), 37 mm x 137 (2" x 6") slats and 37 mm x 86 mm (2" x 4") UltraPlast™ recycled plastic bullnose profile
- ✕ Steel bench structure and legs
- ✕ Chameleon hardware
- ✕ Stainless steel standard anchors (for concrete)
- ✕ Factory assembled

Available installations

- ✕ Surface mounted
- ✕ In-ground mounted

Options

- ✕ Center armrest
- ✕ Anti-theft stainless steel anchors
- ✕ Anti-theft stainless steel hardware
- ✕ Customize engraving

TABLE

Product code(s): PKT

Dimensions: 762 mm x 473 mm x 768 mm
(30" x 18 5/8" x 30 1/4" high)

Weight: 26 kg (57 lb.)

Features

- ✕ Steel structure coated with InfiniGuard Professional anti-corrosion system
- ✕ Bench manufactured with 37 mm x 137 (2" x 6") slats and 37 mm x 86 mm (2" x 4") UltraPlast™ recycled plastic bullnose profile
- ✕ Chameleon hardware
- ✕ Stainless steel standard anchors (for concrete)
- ✕ Factory assembled

Available installations

- ✕ Surface mounted
- ✕ In-ground mounted

Options

- ✕ Anti-theft stainless steel anchors
- ✕ Anti-theft stainless steel hardware



SIGNATURE DA VINCI SERIES

13

Graceful curves!



72" STRAIGHT BENCH

Product code(s): 294107

Dimensions: 1829 mm x 435 mm x 442 mm
(72" x 17 1/8" x 17 3/8" high)

Weight: 62 kg (136 lb.)

72" BENCH

Product code(s): 294106

Dimensions: 1829 mm x 649 mm x 808 mm
(72" x 25 1/2" x 31 3/4" high)

Weight: 87 kg (191 lb.)

Features

- ✕ Steel structure coated with InfiniGuard Professional anti-corrosion system
- ✕ Bench manufactured with 37 mm x 62 mm (2" x 3") slats and a 62 mm x 62 mm (3" x 3") UltraPlast™ recycled plastic bullnose profile
- ✕ Chameleon hardware
- ✕ Stainless steel standard anchors (for concrete)
- ✕ Factory assembled

Available installations

- ✕ Surface mounted

Options

- ✕ Stainless steel anti-theft hardware
- ✕ Stainless steel anti-theft anchors
- ✕ In-ground permanent fastening adaptor
- ✕ Armrest (294106, bench only)
- ✕ Customize engraving



TRASH RECEPTACLE

Product code(s): 284402

Dimensions: 688 mm diam. x 949 mm
(27 1/8" diam. x 37 3/8" high)

Weight: 79 kg (172 lb.)

Receptacle made of galvanized steel, 109 liters
(28 gallons US)

Features

- ✕ Steel structure coated with InfiniGuard Professional anti-corrosion system
- ✕ Slats, 37 mm x 62 mm (2" x 3") made of UltraPlast™ recycled plastics
- ✕ Embossed steel cover
- ✕ Chameleon hardware

- ✕ Receptacle empties by side opening
- ✕ Stainless steel standard anchors (for concrete)
- ✕ Factory assembled

Available installations

- ✕ Surface mounted

Options

- ✕ Stainless steel anti-theft hardware
- ✕ Stainless steel anti-theft anchors
- ✕ In-ground permanent fastening adaptor
- ✕ Side ashtray



SIGNATURE LAVIOLETTE SERIES



Adaptable and versatile!

60" BENCH

Product code(s): 594101

Dimensions: 1524 mm x 596 mm x 803 mm
(60" x 23 1/2" x 31 5/8" high)

Weight: 85 kg (189 lb.)

60" STRAIGHT BENCH

Product code(s): 594002

Dimensions: 1524 mm x 562 mm x 608 mm
(60" x 22 1/8" x 24" high)

Weight: 61 kg (150 lb.)

Features

- ✘ Steel structure coated with InfiniGuard Professional anti-corrosion system
- ✘ Bench manufactured with 37 mm x 62 mm (2" x 3") slats and a 62 mm x 62 mm (3" x 3") UltraPlast™ recycled plastic bullnose profile
- ✘ Flat steel legs 6 mm x 75 mm (1/4" x 3")
- ✘ Flat steel seat support 10 mm x 100 mm (3/8" x 4")
- ✘ Steel reinforcement tubes
- ✘ Chameleon hardware
- ✘ Stainless steel standard anchors (for concrete)
- ✘ Factory assembled

Available installations

- ✘ Surface mounted
- ✘ In-ground mounted

Options

- ✘ Stainless steel anti-theft hardware
- ✘ Stainless steel anti-theft anchors
- ✘ Semi assembled
- ✘ Central Armrest (bench 594101 only)



SIGNATURE FRANKLIN SERIES

15

Stylish and versatile!

72" PICNIC TABLE

Product code(s): 574401

Dimensions: 1829 mm x 1911 mm x 787 mm
(72" x 75 1/4" x 31" high)

Weight: 196 kg (431 lb.)

Features

- ✕ Steel structure coated with InfiniGuard Professional anti-corrosion system
- ✕ Table top manufactured with 32 mm x 141 mm (1.25" x 6") slats and a 62 mm x 62 mm (3" x 3") UltraPlast™ recycled plastic bullnose profile
- ✕ Seat manufactured with 32 mm x 62 mm (1.25" x 3") slats and a 62 mm x 62 mm (3" x 3") UltraPlast™ recycled plastic bullnose profile
- ✕ Flat steel table legs, 6.4 mm x 76 mm (1/4" x 3"), and 6.4 mm x 76 mm (1/4" x 3") seat legs
- ✕ Tubular steel table and seat beds, 33 mm diam. (1.3" diam.) and 6.4 mm x 51 mm (1/4" x 2") flat steel
- ✕ Chameleon hardware
- ✕ Stainless steel standard anchors (for concrete)
- ✕ Factory assembled

Available installations

- ✕ Surface mounted

Options

- ✕ Stainless steel anti-theft hardware
- ✕ Stainless steel anti-theft anchors
- ✕ In-ground permanent fastening adaptor
- ✕ Customize engraving





AVENUE

Collection

The Avenue collection has been produced and adapted for the dynamic environment of the city, providing style, creativity and durability.

Dynamic
Long-lasting

- _ PUBLIC PLACE SERIES
- _ CONTOUR SERIES
- _ NICOLET SERIES
- _ VICTORIAN SERIES
- _ DE VERCHERE SERIES
- _ PHOENIX SERIES
- _ STONEHAM SERIES
- _ BROMONT SERIES

AVENUE PUBLIC PLACE SERIES



Simple and advantageous!

60" BENCH

Product code(s): 194103

Dimensions: 1511 mm x 738 mm x 801 mm
(59 1/2" x 29 1/8" x 31 1/2" high)

Weight: 73 kg (160 lb.)

Features

- ✘ Steel structure coated with InfiniGuard Professional anti-corrosion system
- ✘ Bench manufactured with 37 mm x 62 mm (2" x 3") slats and a 37 mm x 62 mm (2" x 3") UltraPlast™ recycled plastic bullnose profile
- ✘ Tubular steel legs, 100 mm x 153 mm (4" x 6")
- ✘ Flat steel still plates, 10 mm x 100 mm (3/8" x 4")
- ✘ Tubular steel seat structure, 25 mm x 51 mm (1" x 2")
- ✘ Flat steel seat support, 10 mm x 51 mm (3/8" x 2")
- ✘ Chameleon hardware
- ✘ Stainless steel standard anchors (for concrete)
- ✘ Factory assembled

Available installations

- ✘ Surface mounted
- ✘ In-ground mounted

Options

- ✘ Stainless steel anti-theft anchors
- ✘ Ductile cast iron armrests
- ✘ Customize engraving
- ✘ Available in 72"





60" STRAIGHT BENCH

Product code(s): 194044-5
 Dimensions: 1511 mm x 465 mm x 462 mm
 (59 1/2" x 18 3/8" x 18 1/4" high)
 Weight: 43 kg (94 lb.)

72" STRAIGHT BENCH

Product code(s): 194044-6
 Dimensions: 1816 mm x 465 mm x 462 mm
 (71 1/2" x 18 3/8" x 18 1/4" high)
 Weight: 47 kg (103 lb.)

120" STRAIGHT BENCH

Product code(s): 194044-10
 Dimensions: 3035 mm x 465 mm x 462 mm
 (119 1/2" x 18 3/8" x 18 1/4" high)
 Weight: 83 kg (181 lb.)

Features

- ✘ Steel structure coated with InfiniGuard Professional anti-corrosion system
- ✘ Bench manufactured with 37 mm x 86 mm (2" x 4") slats and a 37 mm x 86 mm (2" x 4") UltraPlast™ recycled plastic bullnose profile
- ✘ Tubular steel legs, 64 mm x 64 mm (2 1/2" x 2 1/2")
- ✘ Flat steel seat structure, 10 mm x 51 mm (3/8" x 3")
- ✘ Steel longitudinal reinforcements 4.8 mm x 51 mm (3/16" x 2")
- ✘ Chameleon hardware
- ✘ Stainless steel standard anchors (for concrete)
- ✘ Factory assembled

Available installations

- ✘ Surface mounted
- ✘ In-ground mounted

Options

- ✘ Stainless steel anti-theft hardware
- ✘ Stainless steel anti-theft anchors
- ✘ Armrest
- ✘ Assembly required
- ✘ *Other structure (see picture)

Product code: 194010



AVENUE PUBLIC PLACE SERIES



174409-ADA



Simple and advantageous!

79 3/4" X 79 3/4" PICNIC TABLE

Product code(s): 174409

Dimensions: outer dimensions: 2026 mm x 2026 mm x 768 mm (79 3/4" x 79 3/4" x 30 1/4" high), top: 1164 mm x 1164 mm (45 7/8" x 45 7/8")

Weight: 90 kg (200 lb.)

Features

- ✕ Steel structure coated with InfiniGuard Professional anti-corrosion system
- ✕ Table top manufactured with 37 mm x 137 mm (2" x 6") slats and a 62 mm x 62 mm (3" x 3") UltraPlast™ recycled plastic bullnose profile
- ✕ Seats manufactured with 37 mm x 86 mm (2" x 4") slats and a 37 mm x 86 mm (2" x 4") UltraPlast™ recycled plastic bullnose profile
- ✕ Tubular steel legs 102 mm x 102 mm (4" x 4")
- ✕ Tubular steel seat support, 60 mm diam. (2 3/8" diam.)
- ✕ Chameleon hardware
- ✕ Stainless steel standard anchors (for concrete)
- ✕ Factory assembled

Available installations

- ✕ Surface mounted
- ✕ In-ground mounted

Options

- ✕ Stainless steel anti-theft hardware
- ✕ Stainless steel anti-theft anchors
- ✕ Semi assembled
- ✕ Umbrella hole
- ✕ Chessboard
- ✕ Customize engraving

PICNIC TABLE (SQUARE)

Product code(s): 174408

Dimensions: outer dimensions: 1977 mm x 1977 mm x 761 mm (77 7/8" x 77 7/8" x 30" high), top: 1164 mm x 1164 mm (45 7/8" x 45 7/8")

Weight: 145 kg (320 lb.)

Features

- ✕ Steel structure coated with InfiniGuard Professional anti-corrosion system
- ✕ Table top manufactured with 37 mm x 137 mm (2" x 6") slats and a 62 mm x 62 mm (3" x 3") UltraPlast™ recycled plastic bullnose profile
- ✕ Benches manufactured with 37 mm x 86 mm (2" x 4") slats and a 37 mm x 86 mm (2" x 4") UltraPlast™ recycled plastic bullnose profile
- ✕ Tubular steel legs, 48 mm diam. (1.9" diam.)
- ✕ Chameleon hardware
- ✕ Stainless steel standard anchors (for concrete)
- ✕ Factory assembled

Available installations

- ✕ Surface mounted

Options

- ✕ Stainless steel anti-theft anchors
- ✕ Chessboard
- ✕ Umbrella hole
- ✕ Semi assembled
- ✕ Customize engraving



174408-ADA





CHESSBOARD 14''

Dimensions : 356 mm x 356 mm x 13 mm
(14 po x 14 po x 0,5 po d'épaisseur)

CHESSBOARD 14'' / AL

Dimensions : 356 mm x 356 mm
(14 po x 14 po x 0,08 po d'épaisseur)

CHESSBOARD 16''

Dimensions : 406 mm x 406 mm x 13 mm
(16 po x 16 po x 0,5 po d'épaisseur)

Features

- ✘ African granite chessboard (14 & 16, chessboard only)
- ✘ Anodized aluminum chessboard (14 / AL & 16 / AL, chessboard only)
- ✘ Anti-theft hardware

Available installations

- ✘ Factory assembled



28 5/8'' X 28 5/8'' GAME TABLE

Product code(s): 174430

Dimensions: 727 mm x 727 mm x 734 mm
(28 5/8'' x 28 5/8'' x 28 7/8'' high)

Weight: 32 kg (71 lb.)

- ✘ Table top manufactured with 37 mm x 137 mm (2'' x 6'') slats and a 62 mm x 62 mm (3'' x 3'') UltraPlast™ recycled plastic bullnose profile
- ✘ Tubular steel central support, 60 mm diam. (2 3/8'' diam.)

20'' BENCH FOR GAME TABLE

Product code(s): 194128

Dimensions: 502 mm x 533 mm x 789 mm
(19 3/4'' x 21'' x 31 1/8'' high)

Weight: 60 kg (127 lb.)

- ✘ Bench manufactured with 37 mm x 62 mm (2'' x 3'') UltraPlast™ recycled plastics slats
- ✘ Tubular steel legs, 64 mm x 64 mm (2 1/2'' x 2 1/2'') and 10 mm x 76 mm (3/8'' x 3'') flat steel

Features

- ✘ Steel structure coated with InfiniGuard Professional anti-corrosion system
- ✘ Chameleon hardware
- ✘ Stainless steel standard anchors (for concrete)
- ✘ Factory assembled

Available installations

- ✘ Surface mounted
- ✘ In-ground mounted

Options

- ✘ Stainless steel anti-theft hardware
- ✘ Stainless steel anti-theft anchors
- ✘ Chessboard, ECHEC-14/16 (174430, game table only)
- ✘ Semi assembled (174430, game table only)
- ✘ Customize engraving



AVENUE PUBLIC PLACE SERIES



Simple and
advantageous!

72" PICNIC TABLE

Product code(s): 174403

Dimensions: outer dimensions: 1816 mm x 1545 mm x 792 mm

(71 1/2" x 60 7/8" x 31 1/4" high),

Top: 1816 mm x 718 mm (71 1/2" x 28 1/4")

Weight: 122 kg (268 lb.)

92" PICNIC TABLE

Product code(s): 174504

Dimensions: outer dimensions: 2426 mm x 1600 mm x 789 mm

(95 1/2" x 63" x 31 1/4" high), top: 2426 mm x 721 mm

(95 1/2" x 28 3/8")

Weight: 159 kg (351 lb.)

72" PICNIC TABLE

Product code(s): 174503

Dimensions: outer dimensions: 1816 mm x 1599 mm x 792 mm

(71 1/2" x 63" x 31 1/4" high), top: 1816 mm x 721 mm

(71 1/2" x 28 3/8")

Weight: 132 kg (291 lb.)

72" PICNIC TABLE

Product code(s): 174505

Dimensions: outer dimensions: 1816 mm x 1599 mm x 792 mm

(71 1/2" x 63" x 31 1/4" high), top: 1816 mm x 721 mm

(71 1/2" x 28 3/8")

Weight: 132 kg (291 lb.)

Features

- ✕ Galvanized steel structure
- ✕ Tubular galvanized steel legs, 60 mm diam. (2 3/8" diam.)
- ✕ Galvanized steel longitudinal reinforcements, 4.8 mm x 51 mm (3/16" x 2")
- ✕ Stainless steel standard anchors (for concrete)
- ✕ Chameleon hardware
- ✕ Factory assembled
- ✕ Table top manufactured with 37 mm x 137 mm (2" x 6") slats and a 37 mm x 62 mm (2" x 3") UltraPlast™ recycled plastic bullnose profile (174403, picnic table, 72" only)
- ✕ Table top and seats, manufactured with 37 mm x 137 mm (2" x 6") UltraPlast™ recycled plastics slats (174503, picnic table, 72" only)
- ✕ Table top and seats manufactured with 37 mm x 238 mm (2" x 10") UltraPlast™ recycled plastics slats (174505, picnic table, 72" only)
- ✕ Steel angle 38 mm x 38 mm x 5 mm (1 1/2" x 1 1/2" x 3/16") (for table 174514, 174504, 174505)

Available installations

- ✕ Surface mounted

Options

- ✕ InfiniGuard Professional anti-corrosion system coating
- ✕ Stainless steel anti-theft hardware
- ✕ Stainless steel anti-theft anchors
- ✕ Customize engraving



174504



174503



3 RECEPTACLE RECYCLING UNIT

Product code(s): BIR-3

Dimensions: 981 mm x 1006 mm x 980 mm
(38 5/8" x 39 5/8" x 38 9/16" high),

Weight: 55.18 kg (121.66 lbs.)

Features

- ✘ This recycling unit is made of UltraPlast™ recycled plastic and its structure is made of steel coated with our InfiniGuard Professional anti-corrosion system
- ✘ Trash receptacle is made of 3/4" x 3" (19 mm x 68 mm)
- ✘ Structure is made of steel, 3/16" thick (5 mm)
- ✘ EcoloTOP lid
- ✘ Receptacles are removable for storage (anti-theft-lock - key included)
- ✘ Capacity: 28 US gal. (108 liters) each
- ✘ Chameleon hardware
- ✘ Stainless steel standard anchor for concrete
- ✘ Factory assembled

Available installations

- ✘ Surface mounted

Options

- ✘ Stainless steel anti-theft anchor
- ✘ Stainless steel anti-theft hardware
- ✘ Header for banner

72" PICNIC TABLE

Product code(s): 174423

Dimensions: outer dimensions: 1977 mm x 1977 mm x 761 mm
(77 7/8" x 77 7/8" x 30" high), top: 1816 mm x 718 mm
(71 1/2" x 28 1/4")

Weight: 145 kg (320 lb.)

Features

- ✘ Steel structure coated with InfiniGuard Professional anti-corrosion system
- ✘ Table top manufactured with 37 mm x 137 mm (2" x 6") slats and a 37 mm x 62 mm (2" x 3") UltraPlast™ recycled plastic bullnose profile
- ✘ Bench manufactured with 37 mm x 86 mm (2" x 4") slats and a 37 mm x 62 mm (2" x 3") UltraPlast™ recycled plastic bullnose profile
- ✘ Tubular steel legs 76 mm x 76 mm (3" x 3")
- ✘ Longitudinal reinforcements, 4.8 mm x 51 mm (3/16" x 2")
- ✘ Chameleon hardware
- ✘ Stainless steel standard anchors (for concrete)
- ✘ Factory assembled

Available installations

- ✘ Surface mounted
- ✘ In-ground mounted

Options

- ✘ Stainless steel anti-theft hardware
- ✘ Stainless steel anti-theft anchors
- ✘ Customize engraving



AVENUE PUBLIC PLACE SERIES



TRASH RECEPTACLE AND ASHTRAY

Product code(s): 114419

Dimensions: 418 mm diam. x 809 mm
(16 1/2" diam. x 31 7/8" high)

Weight: 50 kg (110 lb.)

Capacity: Galvanized steel receptacles, 14 liters
(3.6 US gal.), trash can liners required

Features

- ✘ Steel structure coated with InfiniGuard Professional anti-corrosion system
- ✘ Manufactured with 37 mm x 37 mm (2" x 2") UltraPlast™ recycled plastic slats
- ✘ Steel hoops, 6.4 mm (1/4" thick)
- ✘ Lateral opening for trash: 270 mm x 213 mm (10 5/8" x 8 3/8" high)
- ✘ Stainless steel standard anchors (for concrete)
- ✘ Chameleon hardware

Available installations

- ✘ Surface mounted
- ✘ Factory assembled

Options

- ✘ Stainless steel anti-theft hardware
- ✘ Stainless steel anti-theft anchors
- ✘ In-ground permanent fastening adaptor

TRASH RECEPTACLE COVER

Product code(s): 10C402

Dimensions: 597 mm diam. x 70 mm
(23 1/2" diam. x 2 3/4" thick)

Weight: 9.5 kg (21 lb.)

Features

- ✘ Manufactured with black UltraPlast™ recycled plastics
- ✘ Central opening 254 mm diam. (10" diam.) with stainless steel hinges
- ✘ Vinyl coated steel retention cables for trash receptacle
- ✘ Stainless steel hardware

SIDE ASHTRAY

Product code(s): 101411

Dimensions: 76 mm diam. x 445 mm
(3" diam. x 17 1/2" high)

Weight: 1.5 kg (3.4 lb.)

Capacity: 1 liter (0.26 US gal.)

Features

- ✘ Manufactured with 14 ga steel (1.9 mm or 0.075" thick) coated with InfiniGuard Professional anti-corrosion system
- ✘ Can be attached to most of our trash receptacle models
- ✘ Fire- and warp-resistant
- ✘ Easy to empty
- ✘ Stainless steel hardware
- ✘ Factory assembled

Options

- ✘ Stainless steel anti-theft anchors

FLOWER PLANTER

Product code(s): 114417

Dimensions: 550 mm diam. x 565 mm
(21 5/8" diam. x 22 1/4" high)

Weight: 40 kg (88 lb.)

Features

- ✘ Steel structure coated with InfiniGuard Professional anti-corrosion system
- ✘ Manufactured with 37 mm x 62 mm (2" x 3") UltraPlast™ recycled plastic slats
- ✘ Polyethylene receptacle, 432 mm diam. x 330 mm (17" diam. x 13" high)
- ✘ Stainless steel standard anchors (for concrete)
- ✘ Factory assembled

Available installations

- ✘ Surface mounted
- ✘ In-ground mounted

Options

- ✘ Stainless steel anti-theft anchors



114419

10C402

101411

Simple and advantageous!

TRASH RECEPTACLE

Product code(s): 184418
 Dimensions: 559 mm diam. x 813 mm (23 5/8" diam. x 32" high)
 Weight: 65 kg (144 lb.)
 Capacity: Galvanized steel receptacle, 106 liters (28 US gal.)
 Option: -Ecolotop E24
 -OPA

TRASH RECEPTACLE

Product code(s): 184402
 Dimensions: 598 mm diam. x 749 mm (23 1/2" diam. x 29 1/2" high)
 Weight: 54 kg (120 lb.)
 Capacity: Galvanized steel receptacle, 75 liters (20 US gal.)
 Option: -Ecolotop E24
 -OPA

TRASH RECEPTACLE

Product code(s): 184417
 Dimensions: 550 mm diam. x 749 mm (21 5/8" diam. x 29 1/2" high)
 Weight: 54 kg (120 lb.)
 Capacity: Galvanized steel receptacle, 75 liters (20 US gal.)
 Option: Ecolotop E22

TRASH RECEPTACLE

Product code(s): 184432
 Dimensions: 676 mm diam. x 806 mm (26 5/8" diam. x 31 3/4" high)
 Weight: 70 kg (155 lb.)
 Capacity: Galvanized steel receptacle, 129 liters (34 US gal.)
 Option: Ecolotop E22

Features

- ✕ Steel structure coated with InfiniGuard Professional anti-corrosion system
- ✕ Manufactured with 37 mm x 62 mm (2" x 3") UltraPlast™ recycled plastic slats
- ✕ Steel hoops, 6.4 mm (1/4" thick)
- ✕ Chameleon hardware
- ✕ Stainless steel standard anchors (for concrete)
- ✕ Factory assembled

Available installations

- ✕ Surface mounted
- ✕ In-ground mounted

Options

- ✕ Stainless steel anti-theft hardware
- ✕ Stainless steel anti-theft anchors
- ✕ Lid
- ✕ Ashtray



184402



184432

OPTIONAL ECOLOTOP LID

Product code(s): E22
 Dimension: Diameter 55 cm (22")
 Available with or without hole
 Weight: 2.7 kg (6 lb.)
 Other colors available upon request

OPTIONAL ECOLOTOP LID

Product code(s): E24
 Dimension: Diameter 60 cm (24")
 Available with or without hole
 Weight: 3.1 kg (7 lb.)
 Other colors available upon request

Features

- ✕ Made of recycled/recyclable plastic (HDPE) parts highly resistant to U.V. rays
- ✕ Also composed of stainless steel and aluminum parts



AVENUE PUBLIC PLACE SERIES

Simple and
advantageous!



TRIPLE RECYCLING UNIT

Product code(s): 184300

Dimensions: 590 mm x 933 mm x 1259 mm (24 5/16" x 36 3/4" x 49 5/8" high)

Weight: 94 kg (209 lb.)

Features

- ✘ Steel structure coated with InfiniGuard Professional anti-corrosion system
- ✘ Station manufactured with 25 mm x 73 mm (1" x 3") UltraPlast™ recycled plastic slats
- ✘ Steel structure, 6 mm thickness (1/4")
- ✘ Thermoformed plastic lid
- ✘ Three inside polyethylene receptacles, capacity: 23 US gal. (87 liters)
- ✘ Receptacles empty by the front opening
- ✘ Front opening door with antitheft-lock (key included)
- ✘ Identification plate: trash, plastic and paper
- ✘ Stainless steel galvanized industrial hardware
- ✘ Stainless steel standard anchors (for concrete)
- ✘ Factory assembled

Available installations

- ✘ Surface mounted

Options

- ✘ Side ashtray
- ✘ Anti-theft stainless steel anchors
- ✘ Anti-theft stainless steel hardware
- ✘ Shipped ready to be assembled
- ✘ Customize engraving
- ✘ Double cavities available (184300-D)



AVENUE CONTOUR SERIES

27



Simple and sturdy!

72" BENCH

Product code(s): 230, 232, 233, 234, 238

Dimensions: 1829 mm x 604 mm x 792 mm
(72" x 23 3/4" x 31 1/8" high)

Weight: 71 kg (156 lb.)

Features

- ✘ Steel structure coated with InfiniGuard Professional anti-corrosion system
- ✘ Bench manufactured with 37 mm x 86 mm (2" x 4") slats and 37 mm x 86 mm (2" x 4") UltraPlast™ recycled plastic bullnose profile
- ✘ Tubular steel legs 64 mm x 64 mm (2 1/2" x 2 1/2")
- ✘ Flat steel seat reinforcement, 8 mm x 51 mm (5/16" x 2")
- ✘ Stainless steel hardware
- ✘ Stainless steel standard anchors (for concrete)
- ✘ Assembly required

Available installations

- ✘ Surface mounted
- ✘ In-ground mounted

Options

- ✘ Antitheft stainless steel anchors
- ✘ Factory assembled
- ✘ Armrest
- ✘ Customize engraving

TRASH RECEPTACLE

Product code(s): TR0, TR2, TR4, TR8, TR9

Dimensions: 556 mm x 556 mm x 1003 mm
(21 7/8" x 21 7/8" x 39 1/2" high)

Weight: 73 kg (161 lb.)

Galvanized liner 28 US gal. (109 liters) #12093

Features

- ✘ Steel structure coated with InfiniGuard Professional anti-corrosion system
- ✘ Manufactured with 37 mm x 86 mm (2" x 4") slats and 37 mm x 86 mm (2" x 4") UltraPlast™ recycled plastic bullnose profile
- ✘ Tubular steel legs 60 mm diam. (2 3/8" diam.)
- ✘ Flat steel rings, 6.4 mm x 76 mm (1/4" x 3")
- ✘ Stainless steel hardware
- ✘ Stainless steel standard anchors (for concrete)
- ✘ Factory assembled

Available installations

- ✘ Surface mounted
- ✘ In-ground mounted



AVENUE NICOLET SERIES



Practical!

72" BENCH

Product code(s) : 194110

Dimensions : 1816 mm x 535 mm x 804 mm
(71 1/2" x 21" x 31 5/8" high)

Weight : 78 kg (171 lb)

72" BENCH

Product code(s): 194111

Dimensions: 1816 mm x 523 mm x 785 mm
(71 1/2" x 20 5/8" x 30 7/8" high)

Weight: 69 kg (153 lb.)

Features

- ✘ Steel structure coated with InfiniGuard Professional anti-corrosion system
- ✘ Bench manufactured with 37 mm x 62 mm (2" x 3") slats and 37 mm x 62 mm (2" x 3") UltraPlast™ recycled plastic bullnose profile
- ✘ Flat steel seat reinforcement, 10 mm x 51 mm (3/8" x 2")
- ✘ Chameleon hardware
- ✘ Stainless steel standard anchors (for concrete)
- ✘ Factory assembled
- ✘ Flat steel legs, 10 mm x 76 mm (3/8" x 3") (194110, bench only)
- ✘ Tubular steel legs, 64 mm x 64 mm (2 1/2" x 2 1/2") (194111, bench only)

Available installations

- ✘ Surface mounted
- ✘ In-ground mounted (194111, bench only)

Options

- ✘ Stainless steel anti-theft anchors
- ✘ Armrest
- ✘ In-ground permanent fastening adaptor (194110, bench only)
- ✘ Customize engraving



194110



194111



PICNIC TABLE (HEXAGONAL)

Product code(s): 174618

Dimensions: outer dimensions, 2216 mm x 2142 mm x 769 mm (87 1/4" x 84 3/8" x 30 1/4" high)

Weight: 199 kg (440 lb.)

Features

- ✘ Steel structure coated with InfiniGuard Professional anti-corrosion system
- ✘ Top and seats manufactured with 37 mm x 137 mm (2" x 6") slats and 51 mm x 51 mm (2" x 2") UltraPlast™ recycled plastic bullnose profile
- ✘ Tubular steel structure, 51 mm x 102 mm (2" x 4")
- ✘ Tubular steel seat supports, 38 mm x 76 mm (1 1/2" x 3")
- ✘ Chameleon hardware
- ✘ Stainless steel standard anchors (for concrete)
- ✘ Factory assembled

Available installations

- ✘ Surface mounted

Options

- ✘ Stainless steel anti-theft hardware
- ✘ Stainless steel anti-theft anchors
- ✘ Umbrella hole
- ✘ In-ground permanent fastening adaptor
- ✘ Semi assembled
- ✘ Customize engraving



72" BENCH

Product code(s): 191088

Dimensions: 1803 mm x 602 mm x 819 mm (71" x 23 11/16" x 32 1/4" high)

Weight: 123 kg (270.92 lb.)

Features

- ✘ The bench is made of UltraPlast™ recycled plastic and the structure is made of steel coated with our InfiniGuard Professional anticorrosion system
- ✘ Bench slats 64 mm x 89 mm (3" x 4"), trapezoidal 62 mm x 76 mm (3" x 4") and the bullnose slats are made of 68 mm x 140 mm (3" x 6")
- ✘ Flat steel curved legs, 3/8" x 3" (10 mm x 76 mm)
- ✘ Chameleon hardware
- ✘ Stainless steel standard anchor
- ✘ Factory assembled

Available installations

- ✘ Surface mounted

Options

- ✘ Stainless steel anti-theft hardware
- ✘ Stainless steel anti-theft anchor
- ✘ Armrest
- ✘ Customize engraving



AVENUE VICTORIAN SERIES



Elegant
and classic!

60" BENCH

Product code(s) : 250, 252, 253, 254, 258

Product code(s) : 250-230, 252-230, 253-230, 254-230, 258-230 (exposed hardware)

Dimensions : 1600 mm x 609 mm x 797 mm
(63" x 24" x 31 3/8" high)

Weight : 59 kg (130 lb)

60" STRAIGHT BENCH

Product code(s): VS0, VS2, VS3, VS4, VS8

Dimensions: 1589 mm x 554 mm x 607 mm
(62 1/2" x 21 3/4" x 23 7/8" high)

Weight: 46 kg (101 lb.)

Features

- ✕ Cast aluminum legs
- ✕ Bench manufactured with 37 mm x 62 mm (2" x 3") slats and 37 mm x 62 mm (2" x 3") UltraPlast™ recycled plastic bullnose profile
- ✕ Steel, structure and legs coated with InfiniGuard Professional anti-corrosion system
- ✕ Structural ties are made of flat steel, 6.3 mm x 38 mm (1/4" x 1 1/2") and a round rod, 13 mm (1/2")
- ✕ Flat steel seat reinforcement, 6.3 mm x 51 mm (1/4" x 2")
- ✕ Stainless steel hardware (visible or invisible)
- ✕ Stainless steel standard anchors (for concrete)
- ✕ Assembly required

Available installations

- ✕ Surface mounted

Options

- ✕ Anti-theft stainless steel anchors
- ✕ Factory assembled
- ✕ Customize engraving
- ✕ Available in 72"



AVENUE DE VERCHERE SERIES

31



Back to basics!

60" BENCH

Product code(s): 194121

Dimensions: 1511 mm x 534 mm x 786 mm
(59 1/2" x 21" x 30 7/8" high)

Weight: 66 kg (146 lb.)

Features

- ✘ Steel structure coated with InfiniGuard Professional anti-corrosion system
- ✘ Bench manufactured with 37 mm x 62 mm (2" x 3") slats and a 37 mm x 62 mm (2" x 3") UltraPlast™ recycled plastic bullnose profile
- ✘ Flat steel legs, 10 mm x 76 mm (3/8" x 3")
- ✘ Steel seat reinforcement, 10 mm x 51 mm (3/8" x 2")
- ✘ Chameleon hardware
- ✘ Stainless steel standard anchors (for concrete)
- ✘ Factory assembled

Available installations

- ✘ Surface mounted

Options

- ✘ Stainless steel anti-theft anchors
- ✘ In-ground permanent fastening adaptor
- ✘ Steel armrest
- ✘ Customize engraving

AVENUE PHOENIX SERIES



Ergonomical!

60" BENCH

Product code(s): 994121

Dimensions: 1654 mm x 553 mm x 790 mm
(65 3/4" x 21 3/4" x 31 1/8" high)

Weight: 73 kg (158 lb.)

Features

- ✘ Steel structure coated with InfiniGuard Professional anti-corrosion system
- ✘ Bench manufactured with 37 mm x 62 mm (2" x 3") slats and 37 mm x 62 mm (2" x 3") UltraPlast™ recycled plastic bullnose profile
- ✘ Tubular steel legs, 73 mm diam. (2 7/8" diam.)
- ✘ Tubular steel seat structure, 51 mm diam. (2" diam.)
- ✘ Flat steel seat support, 10 mm x 76 mm (3/8" x 3")
- ✘ Chameleon hardware
- ✘ Stainless steel standard anchors (for concrete)
- ✘ Factory assembled

Available installations

- ✘ Surface mounted
- ✘ In-ground mounted

Options

- ✘ Stainless steel anti-theft hardware
- ✘ Stainless steel anti-theft anchors
- ✘ Customize engraving

AVENUE STONEHAM SERIES

Practical!

BIKE RACK

Product code(s) : SVST-5, SVST-5-MU, SVST-10-D

SVST-5 (accommodates 5 bikes on one side)

Dimensions : 2483 mm x 448 mm x 683 mm
(97 3/4" x 17 5/8" x 26 7/8" high)

SVST-5-MU (wall-mounted, accommodates 5 bikes)

Dimensions : 2134 mm x 191 mm x 352 mm
(84" x 7 1/2" x 13 7/8" deep)

SVST-10-D (accommodates 10 bikes on 2 sides)

Dimensions : 2483 mm x 662 mm x 683 mm
(97 3/4" x 26 1/4" x 26 7/8" high)

Weight : 49 kg (107 lb), 32 kg (70 lb), 64 kg (141 lb)

Features

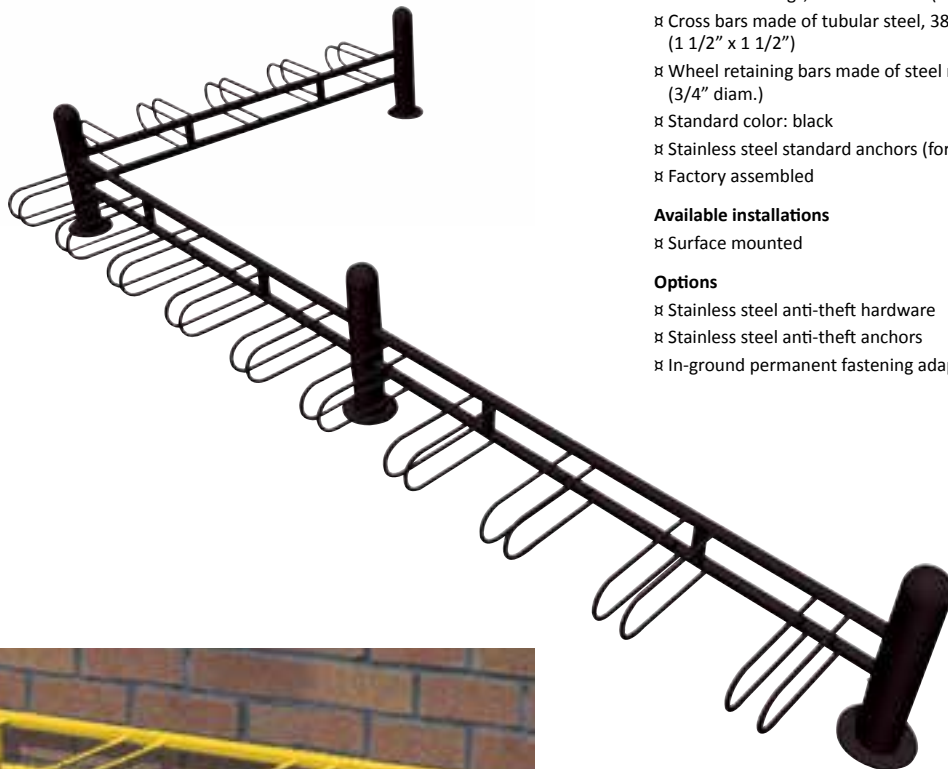
- ✦ Modular design accepts additional sections
- ✦ Steel structure coated with InfiniGuard Professional anti-corrosion system
- ✦ Steel tubular legs, 127 mm diam. (5" diam.)
- ✦ Cross bars made of tubular steel, 38 mm x 38 mm (1 1/2" x 1 1/2")
- ✦ Wheel retaining bars made of steel rods, 19 mm diam. (3/4" diam.)
- ✦ Standard color: black
- ✦ Stainless steel standard anchors (for concrete)
- ✦ Factory assembled

Available installations

- ✦ Surface mounted

Options

- ✦ Stainless steel anti-theft hardware
- ✦ Stainless steel anti-theft anchors
- ✦ In-ground permanent fastening adaptor



Portable and
easily relocated!

BIKE RACK

Produit code(s) : SVBT-5

Dimensions : SVBT-5 (accommodates 5 bikes on 1 side) :

1626 mm x 648 mm x 762 mm (64" x 25 1/2" x 30" high)

Weight : 42 kg (95 lb)

Features

- ✕ Monohull welded galvanized tubular steel construction
- ✕ Two transverse tubes, 48 mm diam. (1.9" diam.)
- ✕ Folded tubing, 27 mm diam. (1.5" diam.)
- ✕ Stainless steel standard anchors (for concrete)
- ✕ Factory assembled

Available installations

- ✕ Surface mounted

Options

- ✕ Stainless steel anti-theft anchors





See on page 44



LEISURE

Collection

Park and recreation area users will appreciate the unique, high quality pieces in our Leisure collection, which are as comfortable as they are rugged.

- _ PARK SERIES
- _ CLASSIC SERIES
- _ JARDIN SERIES
- _ TREMBLANT SERIES
- _ ADIRONDACK SERIES
- _ NEW YORK SERIES



Sturdy
Attractive

LEISURE PARK SERIES



**Economical
and durable!**

60" STANDARD BENCH

Code(s) produit(s) : 160, 162, 163, 164, 168
Dimensions : 1524 mm x 584 mm x 755 mm
(60 po x 23 po x 29 3/4 po de haut)
Poids : 65 kg (143 lb)

72" STANDARD BENCH

Product code(s) : 210, 212, 213, 214, 218
Dimensions : 1829 mm x 584 mm x 755 mm
(72" x 23" x 29 3/4" high)
Weight : 73 kg (162 lb)

60" ECONO BENCH

Product code(s): 150, 152, 153, 154, 158
Dimensions: 1524 mm x 565 mm x 755 mm
(60" x 22 1/4" x 29 3/4" high)
Weight: 55 kg (122 lb.)

Features

- ✕ Manufactured with 37 mm x 137 mm (2" x 6") UltraPlast™ recycled plastic slats
- ✕ Assembly required
- ✕ Legs made of UltraPlast™ recycled plastic
- ✕ Concealed hardware
- ✕ Flat steel support

Available installations

- ✕ Surface mounted

Options

- ✕ Stainless steel anti-theft anchors
- ✕ Factory assembled
- ✕ Armrest
- ✕ Customize engraving





60" DECO BENCH

Product code(s) : 170, 172, 174, 178, 179
 Dimensions : 1524 mm x 568 mm x 753 mm
 (60" x 22 3/8" x 29 5/8" high)
 Weight : 59 kg (129 lb)

72" DECO BENCH

Product code(s) : 190, 192, 193, 194, 198
 Dimensions : 1829 mm x 568 mm x 753 mm
 (72 po x 22 3/8 po x 29 5/8 po de haut)
 Weight : 64 kg (142 lb)

60" STRAIGHT BENCH

Product code(s) : 180, 182, 184, 187, 188
 Dimensions : 1524 mm x 356 mm x 414 mm
 (60" x 14" x 16 3/8" high)
 Weight : 30 kg (66 lb)

Features

- ✘ Manufactured with 37 mm x 137 mm (2" x 6") UltraPlast™ recycled plastic slats
- ✘ Legs made of UltraPlast™ recycled plastic
- ✘ Concealed hardware
- ✘ Assembly required
- ✘ Flat steel support

Available installations

- ✘ Surface mounted

Options

- ✘ Stainless steel anti-theft anchors
- ✘ Factory assembled
- ✘ Armrest
- ✘ Customize engraving



RECYCLING STATION

Product code(s): 650-A, 652-A, 654-A, 658-A, 659-A
 Dimensions: 1201 mm x 738 mm x 1305 mm
 (47 5/16" x 29 1/16" x 51 3/8" high)
 Weight: 156 kg (343 lb.)
 Capacity: Receptacles can accommodate a total of 261 liters (69 US gal.) of trash

Features

- ✘ Steel structure coated with InfiniGuard Professional anti-corrosion system
- ✘ Station manufactured with 25 mm x 68 mm (1 1/4" x 3") UltraPlast™ recycled plastic slats
- ✘ Tubular steel legs, 51 mm x 76 mm (2" x 3")
- ✘ Steel leisure lid, made with 25 mm x 68 mm (1 1/4" x 3") UltraPlast™ recycled plastic slats and 3.2 mm (1/8") thick steel structure coated with InfiniGuard Professional anti-corrosion system

- ✘ Three inside polyethylene receptacles, each accommodating 87 liters (23 US gal.)
- ✘ Receptacles empty from the front
- ✘ Front opening door with anti-theft lock (key included)
- ✘ Identification plates: trash, plastic and paper
- ✘ Stainless steel galvanized industrial hardware
- ✘ Stainless steel standard anchors (for concrete)
- ✘ Factory assembled

Available installations

- ✘ Surface mounted

Options

- ✘ Side ashtray
- ✘ Anti-theft stainless steel anchors



LEISURE PARK SERIES



60" PICNIC TABLE

Product code(s) : 350, 351, 352, 354, 358
Dimensions : 1524 mm x 1532 mm x 751 mm
(60" x 60 3/8" x 29 5/8" high)
Weight : 138 kg (304 lb)

72" PICNIC TABLE

Product code(s) : 410, 411, 412, 414, 418
Dimensions : 1829 mm x 1532 mm x 751 mm
(72" x 60 3/8" x 29 5/8" high)
Weight : 152 kg (334 lb)

96" PICNIC TABLE

Product code(s) : 460, 461, 462, 463, 468
Dimensions : 2438 mm x 1532 mm x 751 mm
(96" x 60 3/8" x 29 5/8" high)
Weight : 191 kg (421 lb)

72" PICNIC TABLE, WITH 3 SUPPORTS

Product code(s) : 400, 402, 403, 404, 408
Dimensions : 1829 mm x 1532 mm x 751 mm
(72" x 60 3/8" x 29 5/8" high)
Weight : 167 kg (367 lb)

Features

- ✕ Manufactured with 37 mm x 137 mm (2" x 6") UltraPlast™ recycled plastic slats
- ✕ Legs manufactured with UltraPlast™ recycled plastic
- ✕ Concealed hardware
- ✕ Assembly required
- ✕ Flat steel support (except model #400)

Available installations

- ✕ Surface mounted

Options

- ✕ Stainless steel anti-theft anchors
- ✕ Factory assembled
- ✕ Customize engraving





Economic and durable!

60" PICNIC TABLE, HANDICAPPED ACCESSIBLE ON ONE SIDE

Product code(s) : 450, 452, 453, 454, 458

Dimensions : 1524 mm x 1137 mm x 751 mm
(60" x 44 3/4" x 29 5/8" high)

Weight : 107 kg (236 lb)

96" PICNIC TABLE, HANDICAPPED ACCESSIBLE ON ONE SIDE

Product code(s) : 470, 471, 472, 473, 478

Dimensions : 2438 mm x 1532 mm x 751 mm
(96" x 60 3/8" x 29 5/8" high)

Weight : 182 kg (404 lb)

Features

- ✘ Manufactured with 37 mm x 137 mm (2" x 6") UltraPlast™ recycled plastic slats
- ✘ Legs made with UltraPlast™ recycled plastic
- ✘ Concealed hardware
- ✘ Assembly required
- ✘ Flat steel support

Available installations

- ✘ Surface mounted

Options

- ✘ Stainless steel anti-theft anchors
- ✘ Factory assembled
- ✘ Customize engraving



3 SECTIONS RECYCLING STATION

Product code(s): 184333

Dimensions: 1138 mm x 581 mm x 1213 mm
(44 13/16" x 22 7/8" x 47 3/4" high)

Weight: 82 kg (181.23 lb.)

Features

- ✘ This recycling station with three separate units is made of UltraPlast™ recycled plastic
- ✘ Trash receptacles are 37 mm x 62 mm (2" x 3") and 37 mm x 37 mm (2" x 2")
- ✘ 5 mm (3/16") steel support, coated with our InfiniGuard Professional anti-corrosion system
- ✘ 6 mm (1/4") plastic sheet
- ✘ Front opening door with anti-theft lock (key included)
- ✘ 3 polyethylene inner receptacles, capacity 87 liters (23 US gal.)
- ✘ Stainless hardware
- ✘ Factory assembled
- ✘ Choice of Pictogram offered

Available installations

- ✘ Surface mounted

Options

- ✘ Stainless steel anti-theft anchor
- ✘ Stainless steel anti-theft hardware
- ✘ Stainless steel standard anchor for concrete
- ✘ Casters



LEISURE PARK SERIES



Economical and durable!

24" X 36" FLOWER PLANTER (RECTANGULAR)

Product code(s) : 525, 526, 527, 528, 529
Dimensions : 610 mm x 914 mm x 533 mm
(24" x 36" x 21" high)
Weight : 54 kg (118 lb)
Capacity : 113 liters (30 US gal.)

24" X 24" FLOWER PLANTER (SQUARE)

Product code(s) : 531, 532, 533, 534, 546
Dimensions : 610 mm x 610 mm x 533 mm
(24" x 24" x 21" high)
Weight : 41 kg (90 lb)
Capacity : 71 liters (19 US gal.)

36" X 36" FLOWER PLANTER (SQUARE)

Product code(s) : 535, 536, 537, 538, 540
Dimensions : 914 mm x 914 mm x 533 mm
(36" x 36" x 21" high)
Weight : 67 kg (148 lb)
Capacity : 170 liters (45 US gal.)

20" X 20" FLOWER PLANTER (PEDESTAL)

Product code(s) : 510, 511, 512, 513, 514
Dimensions : 521 mm x 521 mm x 452 mm
(20 1/2" x 20 1/2" x 17 7/8" high)
Weight : 34 kg (75 lb)
Capacity : 28 liters (7,4 US gal.)

30" X 30" FLOWER PLANTER (PEDESTAL)

Product code(s) : 515, 516, 517, 518, 519
Dimensions : 775 mm x 775 mm x 691 mm
(30 1/2" x 30 1/2" x 27 3/16" high)
Weight : 81 kg (179 lb)
Capacity : 159 liters (42 US gal.)

Features

- ✕ Manufactured with 37 mm x 137 mm (2" x 6") UltraPlast™ recycled plastic slats
- ✕ Manufactured with 25 mm x 149 mm (1" x 6") UltraPlast™ recycled plastic slats (535, square flower planter only)
- ✕ Factory assembled

Available installations

- ✕ Surface mounted

Options

- ✕ Stainless steel anti-theft anchors





E24



OPA



OPB



TRASH RECEPTACLE

Product code(s): 554, 556, 557, 558, 559

Dimensions: 604 mm diam. x 864 mm (23 3/4" diam. x 34" high)

Weight: 44 kg (97 lb.)

Features

- ✘ Manufactured with 25 mm x 121 mm (1" x 4 3/4") UltraPlast™ recycled plastic slats
- ✘ Galvanized steel structure
- ✘ Polyethylene receptacle, 121 liters (32 US gal.), OPC
- ✘ Zinc plated hardware
- ✘ Factory assembled

Available installations

- ✘ Free standing

Options

- ✘ Ecolotop lid (E24)
- ✘ High density polyethylene dome lid (OPA)
- ✘ Funnel type, steel lid (OPB)
- ✘ Surface footer
- ✘ In-ground installation footer
- ✘ Side ashtray
- ✘ Anti-theft stainless steel anchors

14 1/2" FLOWER PLANTER (POLYGONAL)

Product code(s): 500, 501, 502, 503, 508

Dimensions: 356 mm diam. x 356 mm (14" diam. x 14" high)

Weight: 10 kg (21 lb.)

Capacity: 40 liters (10.6 US gal.)

- ✘ Manufactured with 25 mm x 102 mm (1" x 4") UltraPlast™ recycled plastic slats (500, polygonal flower planter only)

20" FLOWER PLANTER (POLYGONAL)

Product code(s): 520, 521, 522, 523, 524

Dimensions: 515 mm diam. x 508 mm (20 1/4" diam. x 20" high)

Weight: 29 kg (62 lb.)

Capacity: 100 liters (26 US gal.)

30 1/4" FLOWER PLANTER, (POLYGONAL)

Product code(s): 541, 542, 543, 548, 549

Dimensions: 768 mm diam. x 559 mm (30 1/4" diam. x 22" high)

Weight: 51 kg (112 lb.)

Capacity: 150 liters (40 US gal.)

Features

- ✘ Manufactured with 37 mm x 137 mm (2" x 6") UltraPlast™ recycled plastic slats
- ✘ Stainless steel band (strip) restraint
- ✘ Factory assembled

Available installations

- ✘ Surface mounted

Options

- ✘ Stainless steel anti-theft anchors



LEISURE CLASSIC SERIES



Traditional!

72" PICNIC TABLE

Product code(s) : 174411-2X3

Dimensions : 1816 mm x 1602 mm x 756 mm

(71 1/2" x 63 1/8" x 29 3/4" high),

top : 1816 mm x 765 mm (71 1/2" x 30 1/8")

Weight : 139 kg (306 lb)

Features

- ✕ Steel structure coated with InfiniGuard Professional anti-corrosion system
- ✕ Table top manufactured with 37 mm x 137 mm (2" x 6") slats and a 37 mm x 62 mm (2" x 3") UltraPlast™ recycled plastic bullnose profile
- ✕ Seats manufactured with 37 mm x 86 mm (2" x 4") slats and a 37 mm x 86 mm (2" x 4") UltraPlast™ recycled plastic bullnose profile
- ✕ Tubular steel structure, 51 mm x 62mm (2" x 3")
- ✕ Chameleon hardware
- ✕ Stainless steel standard anchors (for concrete)
- ✕ Factory assembled

Available installations

- ✕ Surface mounted

Options

- ✕ Stainless steel anti-theft hardware
- ✕ Stainless steel anti-theft anchors
- ✕ In-ground permanent fastening adaptor
- ✕ Customize engraving

LEISURE MOBILIER DE JARDIN SERIES



55" FIX LAWNCHAIR

Product code(s) : CG/

Dimensions : 1395 mm x 584 mm x 906 mm

(54 15/16" x 23" x 35 11/16" high),

Weight : 43 kg (95 lb)

Features

- ✕ The structure is made of steel coated with our « InfiniGuard Professional » anti-corrosion system.
- ✕ Slats are made of UltraPlast™ recycled plastic 22 DEG. 25 mm x 63 mm (1 1/4" x 2 1/2") and 25 mm x 68 mm (1 1/4" x 3")
- ✕ Stainless steel hardware
- ✕ Factory assembled

Available installations

- ✕ Surface mounted

Options

- ✕ Stainless steel standard anchor
- ✕ Stainless steel anti-theft anchor
- ✕ Stainless steel anti-theft hardware
- ✕ Not assembled
- ✕ Customize engraving

LEISURE TREMBLANT SERIES

43

Modular!

BIKE RACK

Product code(s) : SVTR-2, SVTR-4, SVTR-6, SVTR-8, SVTR-10

SVTR-2 (2 spaces)

Dimensions : 406 mm x 633 mm x 564 mm
(16" x 25" x 22 1/4" high)
Weight : 16 kg (33 lb)

SVTR-4 (4 spaces)

Dimensions : 813 mm x 633 mm x 564 mm
(32" x 25" x 22 1/4" high)
Weight : 35 kg (70 lb)

SVTR-6 (6 spaces)

Dimensions : 1219 mm x 633 mm x 564 mm
(48" x 25" x 22 1/4" high)
Weight : 54 kg (110 lb)

SVTR-8 (8 spaces)

Dimensions : 1626 mm x 633 mm x 564 mm
(64" x 25" x 22 1/4" high)
Weight : 73 kg (150 lb)

SVTR-10 (10 spaces)

Dimensions : 2032 mm x 633 mm x 564 mm
(80" x 25" x 22 1/4" high)
Weight : 85 kg (187 lb)

Features

- ✕ Modular design permits limitless add-ons
- ✕ Galvanized tubular steel structure, 25 mm diam. (1" diam.) coated with InfiniGuard Professional anti-corrosion system
- ✕ Base manufactured with black UltraPlast™ recycled plastic features anti-skid grooves
- ✕ Stainless steel standard anchors (for concrete)
- ✕ Factory assembled

Available installations

- ✕ Surface mounted

Options

- ✕ In-ground mounted



LEISURE ADIRONDACK SERIES



Timeless!

CHAIR

Product code(s) : CK1, CK2, CK8

Dimensions : 796 mm x 902 mm x 934 mm
(31 3/8" x 35 1/2" x 36 3/4" high)

Weight : 25 kg (55 lb)

FOOTREST

Product code(s) : CA1, CA2, CA8

Dimensions : 471 mm x 454 mm x 316 mm
(17 7/8" x 18" x 12 1/2" high)

Weight : 7 kg (16 lb)

FOLDING TABLE

Product code(s) : CP1, CP2, CP8

Dimensions : 508 mm x 441 mm x 447 mm
(20" x 17 3/8" x 17 5/8" high)

Weight : 8 kg (18 lb)

Features

- ✕ Entirely manufactured with UltraPlast™ recycled plastic slats and lumber
- ✕ Ergonomic profile
- ✕ Brass hardware
- ✕ Semi-assembled

Available installations

- ✕ Surface mounted

Option

- ✕ Factory assembled (chair)

LEISURE NEW YORK SERIES

45



Modern!

TABLE

Product code(s): TN/
 Dimensions: 457 mm x 460 mm x 454 mm
 (18" x 18 1/8" x 17 7/8" high)
 Weight: 8 kg (18 lb.)

FOOTREST

Product code(s): RN/
 Dimensions: 457 mm x 460 mm x 454 mm
 (18" x 18 1/8" x 17 7/8" high)
 Weight: 8 kg (18 lb.)

CHAIR

Product code(s): CN/
 Dimensions: 791 mm x 940 mm x 963 mm
 (31 1/8" x 37" x 37 7/8" high)
 Weight: 33 kg (72 lb.)

Features

- ✕ The table is made of UltraPlast™ recycled plastic
- ✕ Ruggedly constructed with 3/4" thick (19 mm) rounded edge slats
- ✕ Wheels on the back legs to facilitate moving (CN/, chair only)
- ✕ Stainless steel hardware
- ✕ Factory assembled (RN/ and TN/, footrest and table only)
- ✕ Semi-assembled (CN/, chair only)

Standard installation details:

- ✕ Surface mounted

Options (CN/, chair only)

- ✕ Factory assembled
- ✕ Duckbill anchor

COLORS

Colors shown are an approximate representation.
 For further details please contact your nearest distributor.



TANGERINE



YELLOW



FUCHSIA



SAND



BLUE SKY



GREEN TEA



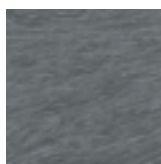
ROYAL BLUE



REDWOOD



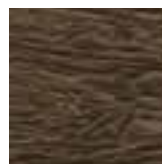
LAVANDER



GRAY



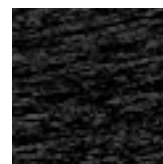
RED



WALNUT



OLIVE GREEN



BLACK



INFINI GUARD
PROTECTION™

PROTECTION

Urban design™



InfiniGuard Premium™ (GPNT)

Hot-dipped galvanized steel components undergo this physical process to ensure good adhesion with the polyester powdercoating, applied electrostatically. Ideal for furnishings used near water.

Or

InfiniGuard Premium™ (APNT)

Aluminum components undergo this physical process to ensure good adhesion with the polyester powdercoating, applied electrostatically. Treated aluminum cannot be damaged by corrosion.

InfiniGuard Professional™ (EPNT)

Steel components undergo this physical process to ensure good coating adhesion. An epoxy primer is applied by electrodeposition dipping to make sure the inside and sharp edges of components are protected. This process is used by the world's leading car and outdoor equipment manufacturers. A polyester powder is then electrostatically applied.

InfiniGuard Standard™ (G)

A hot-dip process to protect galvanized steel components, similar to treatments that highway departments apply to roadside safety railings.

InfiniGuard protection system on steel:

High-quality steel or aluminum is mechanically processed to remove any surface oxidation in order to ensure good adhesion with the polyester powdercoating.

- ⌘ Hot-dipped galvanization or
- ⌘ Zinc immersion cathodic process applies 11 coats of epoxy resin by electrodeposition
- ⌘ Electrostatically applied polyester powdercoat.

URBAIN DESIGN™ WARRANTY

47



URBAIN DESIGN FURNISHINGS ARE COVERED BY AN EXTENDED, 10 YEAR LIMITED WARRANTY THAT GOES INTO EFFECT ON THE INVOICE DATE.

- ✕ 10-year limited warranty covers recycled plastic against rotting, splitting, cracking or splintering during this period.
- ✕ 10-year limited warranty against structural failure of all steel, cast iron and cast aluminum frames and supports when exposed to standard maintenance and use.
- ✕ 10-year limited warranty on InfiniGuard Premium anti-corrosion system when exposed to natural elements.
- ✕ 8-year limited warranty on InfiniGuard Professional anti-corrosion system when exposed to natural elements.
- ✕ 5-year limited warranty on InfiniGuard Standard anti-corrosion system when exposed to natural elements.
- ✕ 1-year year limited warranty on workmanship and/or manufacturing defect on all products.

Within the limits of the law, these warranties have absolute priority over any other warranties, implied or expressed, or any other implied sales warranties.

The warranties do not cover damage caused by neglect, lack of maintenance, vandalism, improper installation, misuse, abuse, new design without authorization, addition or substitution of non-approved parts, ultraviolet radiation, intentional demolition, acts of God or any other inappropriate use of the product that deviates from its intended use.

Warranty claims must be received within the applicable warranty period with a copy of the original invoice or invoice number. The warranties will only cover the replacement of the defective parts..

COLORS

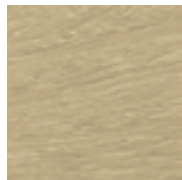
Colors shown are an approximate representation.
For further details please contact your nearest distributor.



GRAY



GREEN



SAND



REDWOOD



BLACK



WALNUT

DECK

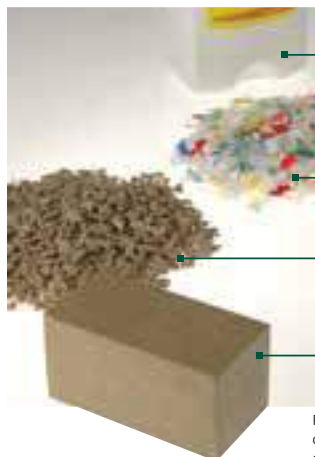
Collection

- ✘ HARDER THAN WOOD
 - ✘ NO SPLINTERS
 - ✘ SUSTAINABLE PRODUCT
 - ✘ ENVIRONMENTALLY SOUND
 - ✘ NO NEED TO STAIN, PAINT OR SEAL
 - ✘ RESISTANT TO CHEMICALS
 - ✘ WILL NOT ROT OR DETERIORATE
 - ✘ RESISTANT TO SURFACE BACTERIA,
TERMITES, INSECTS AND UV RAYS
-



Perma-Deck® Avantage +

**A HERITAGE FOR THE
FUTURE GENERATIONS**



**RECYCLABLE PRODUCTS
MADE OF PLASTIC**
x post-consumer;
x industrial waste products.

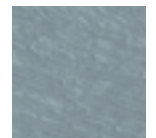
PLASTIC MATERIAL, IN THE PROCESS
of being treated, made of 80% high density
polyethylene (PEHD)

RECYCLED PLASTIC PELLETS
ready to be used in the
production of new products

FINISHED PRODUCTS
x furniture x planks x lumber x etc.

For a natural look, Perma-Deck® Avantage+ products may show a slight color variation among the planks. Also, exposure to sunlight may cause colors to slightly fade. This fading process is normal and does not affect the performance of Perma-Deck® Avantage+ products.

DECK BOARD MADE OF 100% RECYCLED PLASTIC



LIGHT GREY



SAND



REDWOOD



WALNUT



HARBOR GREY



Note: Colors shown are an approximate representation for further details, contact your nearest retailer.

PROJECT

Collection

Closing project, St-Georges-de-Windsor, Qc, GBL



- Faubourg Boisbriand (Decking)
- Camp Massawipi (Decking)
- Festival de St-Tite (Seat slats)
- Caval'art (Plastic fence posts)
- Plastic fence posts (Fields)
- Canada Cup BMX (Podiums)
- Mont Gleason (Recycling station)
- Canada Games (Recycling station)
- & more (customizes projects)



Bridge builders of the 50th anniversary of Cascades, located in Marie-Victorin Park in Kingsey Falls



-Several projects 'Sea Wall'.





PRODUITS RE-PLAST INC. OFFERS YOU A REFINED, ELEGANT LINE OF SITE FURNISHINGS: URBAIN DESIGN™, PRODUCED FROM RECYCLED MATERIALS, WITH A FOCUS ON CREATING OUTDOOR FURNITURE THAT IS BOTH PLEASING TO THE EYE AND ENVIRONMENTALLY FRIENDLY.

URBAIN DESIGN™ CREATES A WELCOMING, SAFE ENVIRONMENT THAT ENCOURAGES PEOPLE TO SPEND QUALITY TIME TOGETHER, SHARING AND ENJOYING LIFE!!



Produits Re-Plast inc.
 1350, Quatre-Saisons Road
 Notre-Dame-du-Bon-Conseil
 (Québec) J0C 1A0
 CANADA
 Telephone : 819 336-2440
 Fax : 819 336-2442
 Customer service : 1 888 313-2440

www.produitsreplast.com



Printed in Canada

